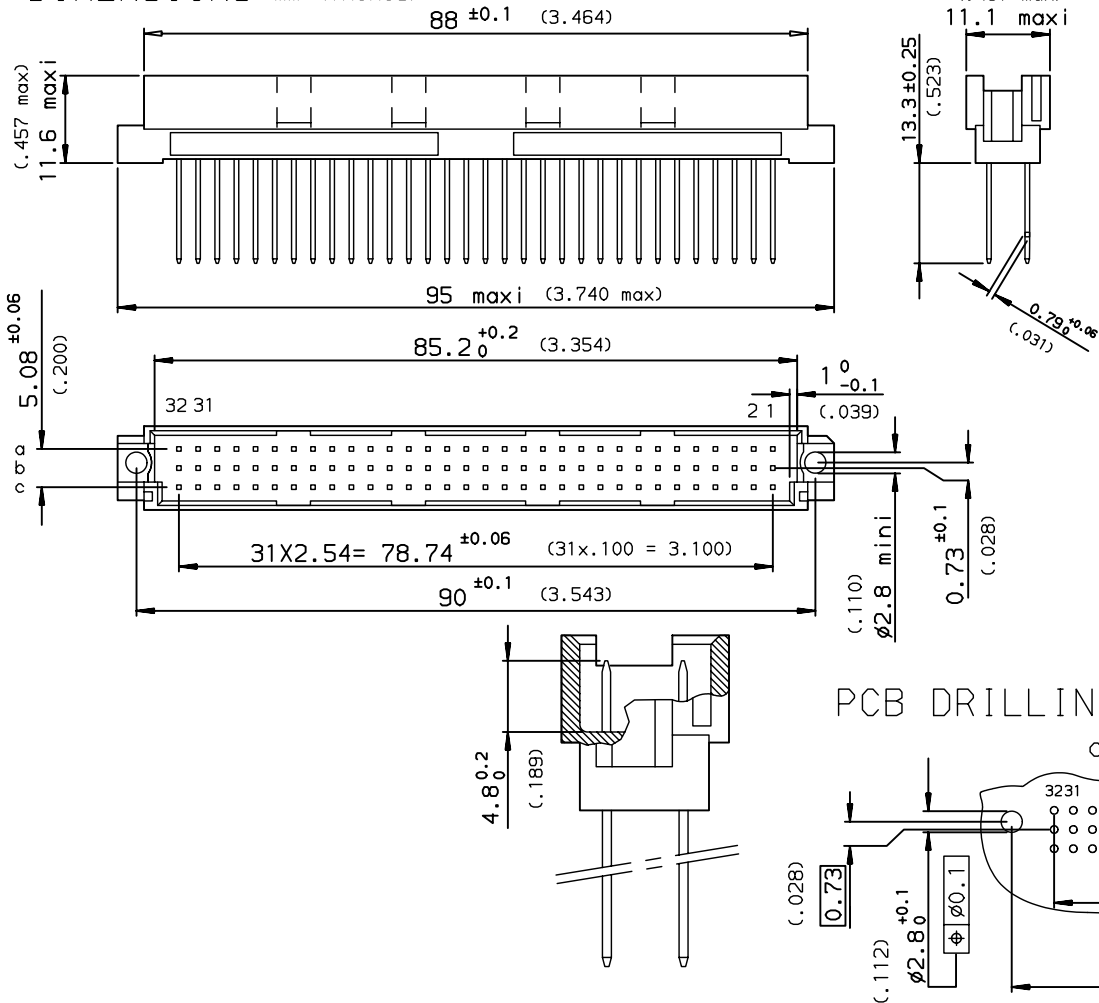


DIMENSIONS mm (inches)



ELECTRICAL DATA

-Current at AMB.	1.5 A at 20° / 1 A at 70°
-I max	2A
-Contact resistance	<20ma according to NFC 93400 Test 2a
-Insulation resistance	>10 ⁶ Ma according to NFC 93400 Test 3a
-TEST VOLTAGE	according to CEI 512 Test 4a
contact/contact	1000V eff (0.5 mA / 50 Hz)
contact/ground	1550V eff (0.5 mA / 50 Hz)

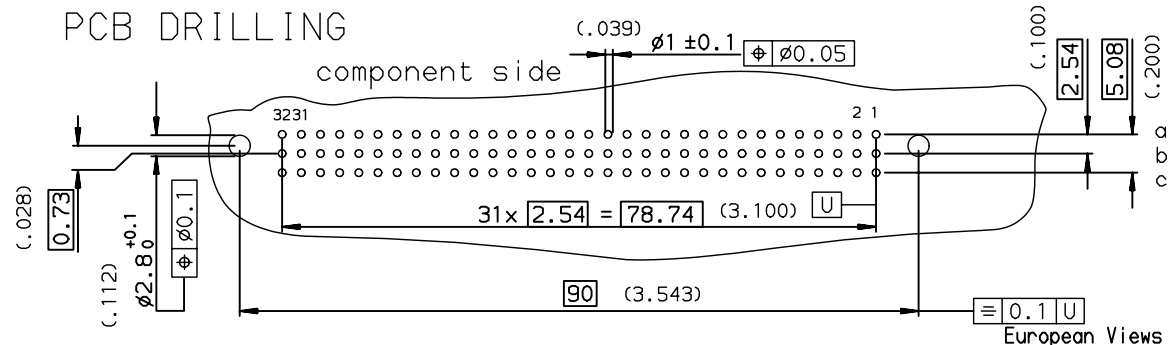
MECHANICAL DATA

-Retention force	>20N per contact
-Mating force	<60N
-Unmating force	>9N
-Mechanical endurance	400 matings unmatings according to NFC 93429
-Material insulator	Polyester thermoplastic UL94V0
-Material contacts	Brass
-Finishing contact surface	Gold over Nickel
-Finishing termination	Tin Lead
-Vibration	10-500Hz/5g according to CEI 512 Test 6d

ENVIRONMENTAL DATA

-Climatic category	According to NFC 93429 - HE 1102
-Corrosion	According to NFC 93429 - HE 1102

PCB DRILLING



European Views

PERFORMANCES AS PER NFC 93429 HE 1102

PART NUMBER : 8609-464-79-15-355-000-E1

rev	ecn no	dr	date
A	-	HLE	1999/06/22
B	LS07-0130	HLE	2007/05/25
-	-	-	-
-	-	-	-
-	-	-	-
-	-	-	-

www.fciconnect.com		surface ISO 1302 ✓	tolerance std ISO 406 ISO 1101	projection mm
TOLERANCES UNLESS OTHERWISE SPECIFIED				
Dr	LEGALLIC	1999/06/22	ANGULAR	LINEAR
Eng	LEGALLIC	1999/06/22	0.X	±0.1
Chr	LEGARE	1999/06/22	0.XX	±0.1
Appr	LEGARE	1999/06/22	0.XXX	±0.1
Product family			DIN	Spec ref -
title STRAIGHT MALE STYLE HE11		dwg no C-8609-0767		Rev. B
catalog no		CUSTOMER		sheet 1 of 1